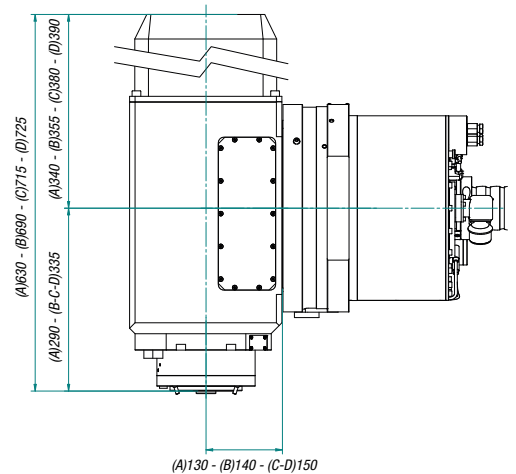


Solution for
**B-AXIS
SYSTEMS**

B-Axis / E line for milling

| | | |
|----------------------|---------------|--------------------------|
| B-AXES | Series | DP0210530/580/600 |
| Rotation Range | ° | ±120 |
| Cynematic | type | Torque |
| Ø Body | mm | 339 h7 |
| Ø Plate Interface | mm | 380 |
| Rated Power | kW S1 | 5,7 |
| Rated Current | A | 17 |
| Peak Torque | Nm | 825 |
| Working Torque | Nm | 452 |
| Stall Torque | Nm | 355 |
| Measuring System | Type | Amo 1Vpp |
| Accuracy | sec | ± 5" |
| Repeatability | sec | ± 2" |
| Brake | Type | Hydraulic |
| Braking Torque | Nm | 3.200 |
| Braking Pressure | bar | 50 |
| Powerless Clamping | Nm | 700 |
| Max Travel Speed | rpm | 90 |
| Hirth Index Coupling | 72 teeth (5°) | NO |



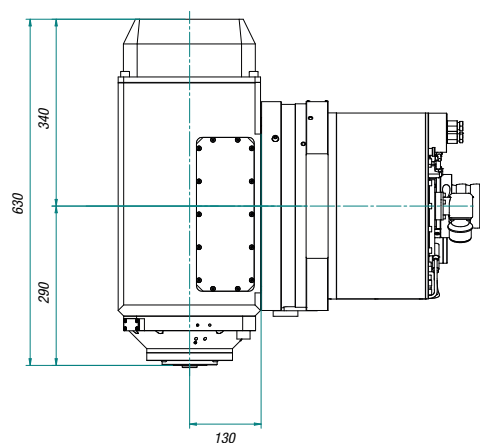
- (A) DP0210600 - HSK A63
- (B) DP0210600 - HSK A100
- (C) DP0210580 - ATC OIL
- (D) DP0210530 - ATC PNEU

| B-AXES | series | DP0210530 / DP0210580 | | | DP0210600 | |
|-----------------------|----------|-----------------------|-----------------|-------------|--------------|--------------|
| | | ELECTRO SPINDLE | | | | |
| Tool Taper | ISO 40 | 11400A170 | 11400A115 | 11400A151 | • | • |
| | HSK A63 | 11063A760 | 11063A550 | 11063A861 | • | • |
| | ISO 50 | • | • | 11500A330 | DP0190020 | • |
| | HSK A100 | • | • | 11100A400 | 11100A260 | 11100A250 |
| Body Dimension | Ø mm | 222 | 222 | 222 | 221 | 201 |
| | nose mm | 140 | 140 | 140 | 105 | |
| Power S1 (S6 60%) | kW | 18,5 (24) | 18,5 (24) | 46 (55) | 45 (53) | 40 (48) |
| Torque S1 (S6 60%) | Nm | 95 (129,5) | 117 (127) | 174 (241) | 172 (205) | 123 (148) |
| Rated Speed | rpm | 1.810 | 1.510 | 2.400 | 2.500 | 3.100 |
| Max Speed | rpm | 18.000 | 15.000 | 12.000 | 16.000 | 16.000 |
| Built-in-Motor | type | asynchronous | asynchronous | synchronous | asynchronous | asynchronous |
| Rated Current | A | 40 | 84 | | 105 | 99 |
| Bearings Lubrication | type | grease for life | grease for life | Air oil | Air oil | Air oil |
| Encoder | type | 1Vpp | 1Vpp | 1Vpp | 1Vpp | 1Vpp |
| Cooling Shaft | type | Yes | Yes | Yes | Yes | Yes |
| Tool Holders Pressure | Bar | 6 | 6 | 6 | 60 | 60 |

Other models size available on request
 • available on request

B-Axis / Compact for milling

| | | |
|----------------------|---------------|------------------|
| B-AXES | Series | DP0210590 |
| Rotation Range | ° | ±120 |
| Cynematic | type | Torque |
| Ø Body | mm | 339 h7 |
| Ø Plate Interface | mm | 380 |
| Rated Power | kW S1 | 5,7 |
| Rated Current | A | 17 |
| Peak Torque | Nm | 825 |
| Working Torque | Nm | 452 |
| Stall Torque | Nm | 355 |
| Measuring System | Type | Amo 1Vpp |
| Accuracy | sec | ± 5" |
| Repeatability | sec | ± 2" |
| Brake | Type | Hydraulic |
| Braking Torque | Nm | 3.200 |
| Braking Pressure | bar | 50 |
| Powerless Clamping | Nm | 700 |
| Max Travel Speed | rpm | 90 |
| Hirth Index Coupling | 72 teeth (5°) | NO |

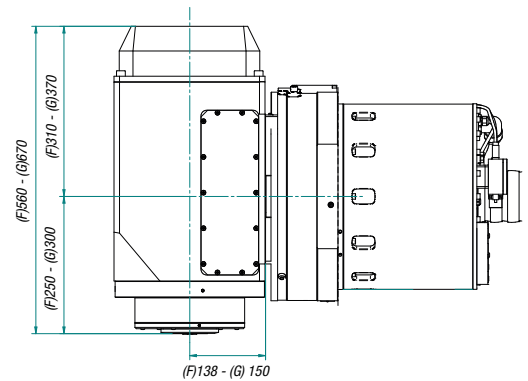
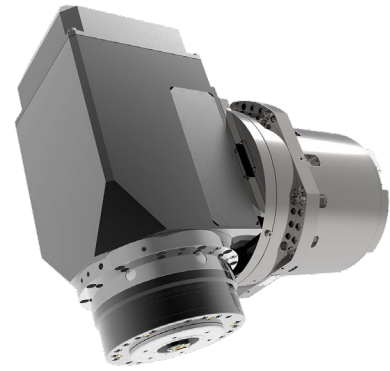


| B-AXES | series | DP0210590 | | |
|-----------------------|----------|------------------|--------------|-------------|
| | | ELECTRO SPINDLE | | |
| Tool Taper | ISO 40 | • | • | • |
| | HSK A63 | 11063A1050 | 11063A1280 | 11063A1060 |
| | ISO 50 | • | • | • |
| | HSK A100 | • | • | • |
| Body Dimension | Ø mm | 208 | 208 | 222 |
| | nose mm | 290 | 290 | 115 |
| Power S1 (S6 60%) | kW | 28 (33) | 45 (58) | 65 (70) |
| Torque S1 (S6 60%) | Nm | 89 (106) | 88 (114) | 117 (126) |
| Rated Speed | rpm | 3.000 | 4.900 | 5.408 |
| Max Speed | rpm | 24.000 | 24.000 | 24.000 |
| Built-in-Motor | type | asynchronous | asynchronous | synchronous |
| Rated Current | A | 71 | 99 | |
| Bearings Lubrication | type | Air oil | Air oil | Air oil |
| Encoder | type | 1Vpp | 1Vpp | 1Vpp |
| Cooling Shaft | type | Yes | Yes | Yes |
| Tool Holders Pressure | Bar | 6 | 6 | 6 |

Other models size available on request
 • available on request

B-Axis / Compact for milling & turning

| | | |
|----------------------|---------------|----------------------------------|
| B-AXES | Series | DP0210680/690 |
| Rotation Range | ° | ±120 |
| Cynematic | type | Torque |
| ∅ Body | mm | 339 h7 |
| ∅ Plate Interface | mm | 380 |
| Rated Power | kW S1 | 5,7 |
| Rated Current | A | 17 |
| Peak Torque | Nm | 825 |
| Working Torque | Nm | 452 |
| Stall Torque | Nm | 355 |
| Measuring System | Type | Amo 1Vpp |
| Accuracy | sec | ± 5" |
| Repeatability | sec | ± 2" |
| Brake | Type | Hydraulic |
| Braking Torque | Nm | 2.750 (13.400 with Hirth) |
| Braking Pressure | bar | 50 |
| Powerless Clamping | Nm | 590 |
| Max Travel Speed | rpm | 90 |
| Hirth Index Coupling | 72 teeth (5°) | YES |

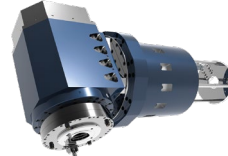


(F) DP0210680
(G) DP0210690

| B-AXES | series | DP0210680 | | DP0210690 | |
|-----------------------|-----------|-----------------|-----------------|--------------|--------------|
| | | ELECTRO SPINDLE | | | |
| Tool Taper | Capto 6/8 | • | • | x | x |
| | HSK T63 | 11063A770 | 11063A1290 | • | • |
| | ISO 50 | • | • | • | • |
| | HSK T100 | • | • | x | x |
| Body Dimension | ∅ mm | 230 | 210 | Integrate | Integrate |
| | pivot mm | 250 | 250 | 300 | 300 |
| Power S1 (S6 60%) | kW | 50 (55) | 23 | 40 | 65 |
| Torque S1 (S6 60%) | Nm | 164 (196) | 81 | 165 | 307 |
| Rated Speed | rpm | 3.270 | 2.680 | 2.058 | 2.315 |
| Max Speed | rpm | 8.000/14.000 | 8.000 | 12.000 | 12.000 |
| Built-in-Motor | type | synchronous | asynchronous | asynchronous | asynchronous |
| Rated Current | A | | | 200 | 135 |
| Bearings Lubrication | type | grease for life | grease for life | Air oil | Air oil |
| Encoder | type | 1Vpp | 1Vpp | 1Vpp | 1Vpp |
| Cooling Shaft | type | Yes | Yes | Yes | Yes |
| Tool Holders Pressure | Bar | 50 | 50 | 60 | 60 |

Other models size available on request
• available on request

B-Axis / Heavy Hirth coupling



| B-AXES | Series | DP0200340 | 17000A010 | 17000A050 |
|----------------------|--------|---------------|--------------------|--------------------|
| Rotation Range | ° | ±120 | ±120 | ±120 |
| Cynematic | type | Torque | Torque | Torque |
| Ø Body | mm | 315 h7 | 370 g6 | 370 g6 |
| Ø Plate Interface | mm | 360 | 450 | 450 |
| Rated Power | kW S1 | 53 | 25,4 | 18 |
| Rated Current | A | 100 | 18 | 51,2 |
| Peak Torque | Nm | 711 | 1.320 | 2.090 |
| Working Torque | Nm | 497 | 744 | 1.537 |
| Stall Torque | Nm | - | 548 | 1.500 |
| Measuring System | Type | Absolute | Absolute | Absolute |
| Accuracy | sec | ± 8" | ± 8" | ± 8" |
| Repeatability | sec | ± 4" | ± 4" | ± 4" |
| Brake | Type | Hydraulic | Hydraulic | Hydraulic |
| Braking Torque | Nm | 2.000 | 4.000 | 4.000 |
| Braking Pressure | bar | 100 | 100 | 100 |
| Powerless Clamping | bar | 6 continuous | constantly on work | constantly on work |
| Max Travel Speed | rpm | 40 | 40 | 40 |
| Hirth Index Coupling | teeth | 144 (2,5°) | 144 (2,5°) | 144 (2,5°) |

| ELECTRO SPINDLE | | | | |
|-----------------------|-----------|-----------------|-----------------|-----------------|
| Tool Taper | CAPTO C8 | • | • | 11022A110 |
| | CAPTO C10 | • | 11023A010 | • |
| | ISO 50 | • | • | • |
| | HSK A100 | • | • | • |
| Body Dimension | mm | 230 x 230 | 325 x 325 | 325 x 325 |
| | nose mm | 478 | 280 | 295 |
| Power S1 (S6 60%) | kW | 25 (31,5) | 56 (57) | 85 (83) |
| Torque S1 (S6 60%) | Nm | 55 (69,5) | 306 (421) | 531 (589) |
| Rated Speed | rpm | 4.300 | 1.800 | 1.500 |
| Max Speed | rpm | 16.000 | 6.000 | 6.000 |
| Built-in-Motor | type | synchronous | synchronous | synchronous |
| Rated Current | A | 75 | 138 | 199 |
| Bearings Lubrication | type | grease for life | grease for life | grease for life |
| Encoder | type | 1Vpp | 1 Vpp | 1 Vpp |
| Cooling Shaft | type | Yes | Yes | Yes |
| Tool Holders Pressure | Bar | 80 | 80 | 80 |

Other models size available on request
 • available on request

The modularity. There is a proposal for basic models, but the system allows, compared to the competition, a wider range of electrospindles compatible with a wide dimensional and performance spectrum: pneu or hydraulic ATC, milling and milling/turning, from ISO 40/50 HSKA63/100 to capto C10.

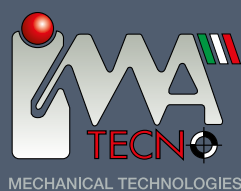
The competitiveness. Priority was given to standard electrospindles belonging to the "e-line" in order to be competitive.

The compactness to allow the maximum operability and flexibility of use in mechanical processing.

The interchangeability. We have paid a lot of attention to some geometric aspects to allow interchangeability with customers who currently use standard type.

The use of the cartridge case and spindle is important not only for interchangeability with the extended range of electro-spindles, but also for **easy extraction for any service interventions.**

Rotary table tilting to **complete the machine axis** proposed tilting tables with our Italian partner.



IMA TECNO S.R.L.

HEADQUARTERS

VIA DELLE INDUSTRIE N.°1

WAREHOUSE

VIA DELL' ARTIGIANATO N.°4

20851 LISSONE (MB) - ITALY

+39 039 2454524

EXPLORE OUR PRODUCT LINES

- ▀ **Machine Tools** / Electro-spindles, Spindles, Heads
- ▀ **Cutting Technology** / Laser, Plasma, Waterjet, Drilling
- ▀ **Ball Screw Support** / Standard and Heavy-duty
- ▀ **Repair and Service** / All Brands

